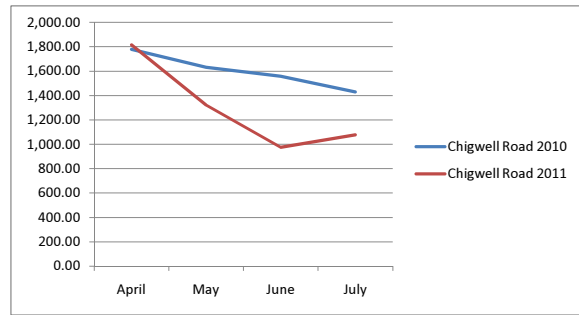
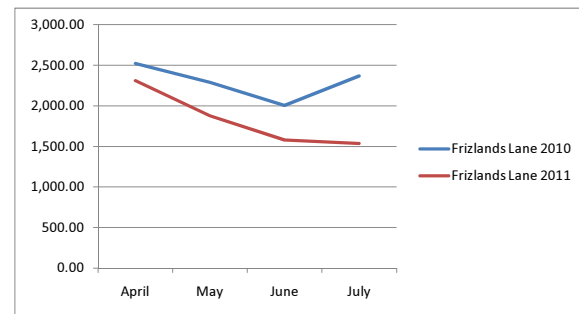


Monthly tonnage comparison 2010 - 2011

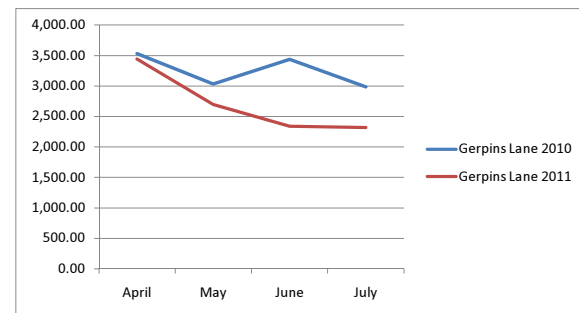
Tonnages	April	May	June	July
Chigwell Road 2010	1,779.14	1,632.16	1,558.22	1,429.78
Chigwell Road 2011	1,814.74	1,322.74	974.97	1,078.73
% drop	-2%	19%	37%	25%



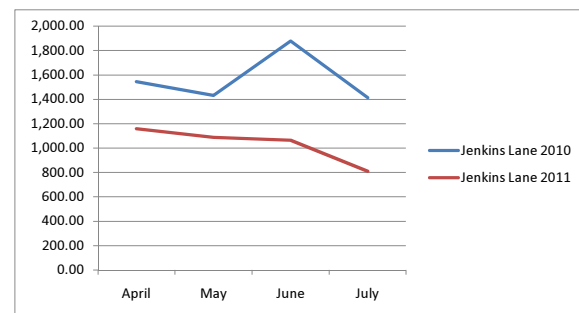
Tonnages	April	May	June	July
Frizlands Lane 2010	2,521.86	2,288.96	2,004.70	2,367.58
Frizlands Lane 2011	2,310.53	1,874.38	1,578.78	1,536.38
% drop	8%	18%	21%	35%



Tonnages	April	May	June	July
Gerpins Lane 2010	3,533.42	3,030.16	3,436.24	2,987.26
Gerpins Lane 2011	3,444.28	2,694.24	2,339.58	2,315.96
% drop	3%	11%	32%	22%



Tonnages	April	May	June	July
Jenkins Lane 2010	1,545.74	1,432.91	1,878.04	1,412.62
Jenkins Lane 2011	1,160.28	1,087.37	1,064.14	809.46
% drop	25%	24%	43%	43%



Tonnages	April	May	June	July
Total 2010	9,380.16	8,384.19	8,877.20	8,197.24
Total 2011	8,729.83	6,978.73	5,957.47	5,740.53
% drop	7%	17%	33%	30%

